

Fast Check MT

Fully Fiber Endface Inspector



-  Automatic Measurement
-  Automatic Focusing
-  Automatic Centering

With the upsurge of artificial intelligence, digital reality, etc., the demand for endface inspection requirements such as 800G, 1.6T optical transceivers, MPO connectors and high-density connectors globally, and the efficiency of production detection has continued to face challenges. In order to quickly improve the efficiency of the production fiber endface inspection, Dimension launched Fastcheck MT Fully Fiber Endface Inspector. For optical transceivers and connectors, the field of view is large enough to inspect all the fibers of the Endface at one time. It is more convenient to use for automation scenario due to automatic focusing, automatic finding center, and automatic Pass/Fail analysis can quickly improve the test efficiency. At the same time, it stores pictures and reports to facilitate production traceability. With independent I/O interface, it can be combined with the Offsoon Pro cleaner to set up an automatic inspection and cleaning solution, making it an ideal choice for automated production lines.

Main Features

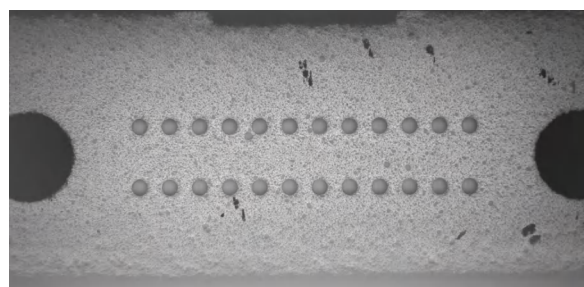
- Fully Fiber Endface Pass/Fail inspection at one time.
- Full automatic detection, high efficiency, measurement speed for about 5 seconds.
- Compatible with a variety of MT connector types and transceivers inspection.
- Software interface is user-friendly.
- Combined with Offsoon Pro cleaning unit to set up a fully automated production line.

Main Application

- 400G/800G/1.6T and other multifiber transceiver manufacturing.
- MT/MPO/MMC/SN-MT or other multifiber connector manufacturing inspection.

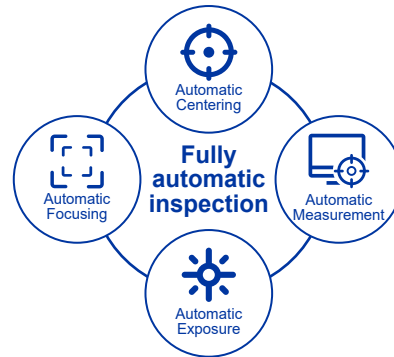
Fully Fiber Endface detection at one time

Fastcheck MT, its hardware adopts a large field of view camera and optical path system. Thanks to the large field of view, it can realize a fast inspection on multifiber at a time which effectively improves the production efficiency.



Automatic Pass/Fail analysis, high efficiency

Automatic focusing, automatic finding center, automatic exposure, automatic inspection, reducing manual operations, and reducing dependence on operators. The test speed is about 5s.



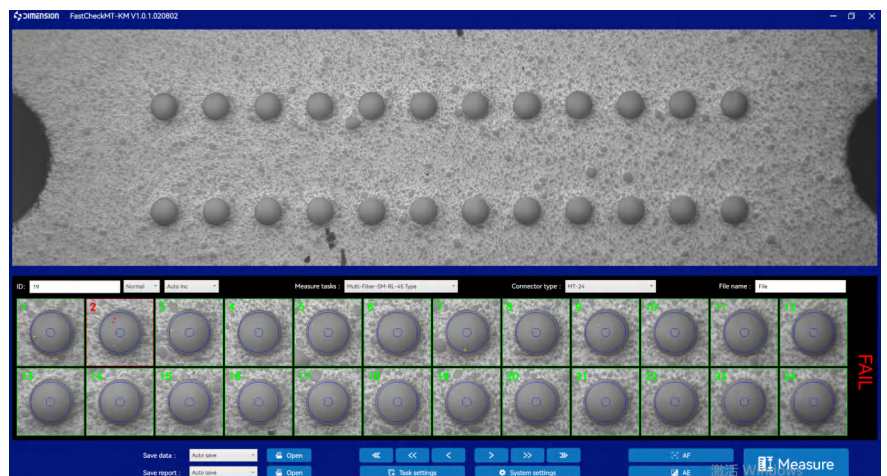
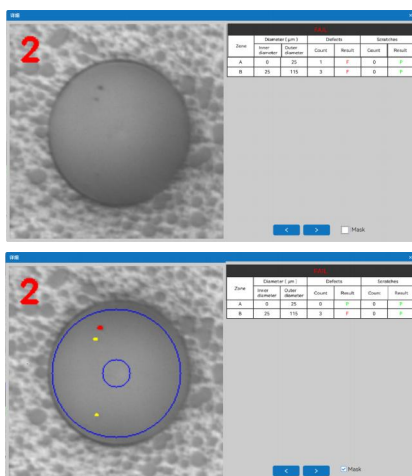
Compatible with a variety of MT connector types and transceivers inspection

A variety of modules such as 400G/800G/1.6T and MT/MPO/MMC/SN-MT and other connectors are compatible.



Software interface is user-friendly

PC Software interface is user-friendly, complete, easy-to-use, the real-time images and Pass/Fail analysis results are clearly visible.



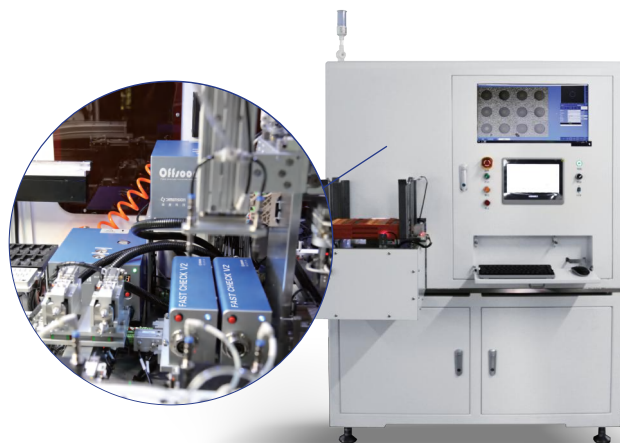
Comprehensive I/O interface

FastCheck MT has an independent I/O interface, which can achieve remote trigger measurement and transmission measurement results; it can realize the linkage with other devices.



Strong extension function

The FastCheck MT can be used in conjunction with the Offsoon Pro to set up a fully automated cleaning and inspection system for multifiber connectors and transceivers.



Parameter performance

Type	Parameter
Optical magnification	3X
Field of View	4.8mm×3.2mm
Detection ability	<2um
Measurement speed (including focus)	5s
Measurement method	Auto
Focusing method	Auto
Working temperature	-10°C~ 40°C
Storage temperature	-20°C~ 55°C
Power supply voltage	DC 24V
Weight	2.7kg
Volume	286mm×101mm×86mm

Related Products



Offsoon Pro



MT Pro



Multifiber IRL Meter



AutoGetWifi

Dimension Technology Co.,Ltd

Tel: +86 755-26480850

Email: sales@dimension-tech.com

Web: www.dimension-tech.com